

Hollywood Christmas

by Karen Snyder

This is the perfect quick quilt when you have a special fabric that needs its own "starring role." Fabrics that are very large scale or just too cute to cut up work fabulously in this quilt. Here, we've used the Santa Claus Lane fabric from Andover Fabrics Wash Tub Prints line by Karen Snyder--*that's me!*

Fabric Requirements

This fabric line comes in two colorways--clear and bright and tea dyed. The fabric requirements are given for the clear and bright, followed by the tea dyed in parenthesis.

$\frac{7}{8}$ yard Santa Stripe

3301-R (3301-RN)



$\frac{3}{4}$ yard Snowflake (border and binding)

3303-R (3303-RN)



$\frac{5}{8}$ yard Holly

3306-G (3306-V)



$\frac{5}{8}$ yard Rings

3122-L (3122-N)



2 yards Dancing Dots for backing

3304-G (3304-N)



Finished size — 42" x 52½"

Cutting

From the Santa Stripe, cut:

- 1) 27" x 42½" piece

From the Snowflake, cut:

- 2) 3" x 42½" strips for side borders
- 5) 2¼" strips for binding

From the Holly, cut:

- 3) 6⅛" strips. Crosscut into 14) 6⅛" squares

From the Rings, cut:

- 3) 6⅛" strips. Crosscut into 14) 6⅛" squares and 4) 5¾" squares for corners.

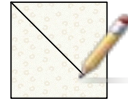


Piecing

Making the half-square triangles

Step 1.

On the back of the light $6\frac{1}{8}$ " squares, draw a diagonal line.



Step 2.

Pair a light $6\frac{1}{8}$ " light square with a $6\frac{1}{8}$ " green square, right sides together.



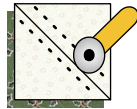
Step 3.

Sew a $\frac{1}{4}$ " on each side of the diagonal line.



Step 4.

Cut apart on marked line.



Press toward the dark.



Step 5.

Make top and bottom borders by joining corner squares and six half square triangles. Figure 1.

Figure 1



Step 5.

Make two side borders by joining eight half square triangles. Figure 2.

Figure 2



Figure 3

Assembling the Top

Step 1.

On a design wall or the floor layout the center panel, side (snowflake) borders and pieced borders. Figure 3.

Step 2.

Add side (snowflake) borders to center panel, followed by pieced side borders.

Step 3.

Add the top and bottom borders.



If working
with a different "starring" fabric,
just make sure that the center -
with borders - is $31\frac{1}{2}$ " x $42\frac{1}{2}$."
If it is, the pieced triangle border
will work every time!

Finishing the Quilt

Step 1.

Cut a 24" piece from the backing fabric. Split this piece down the center to yield two pieces approximately 22" x 24." Remove the selvages.

Step 2.

Sew the two short ends together, to yield a piece approximately 22" x 48."

Step 3.

Split the remaining piece of backing fabric down the middle (along the fold).

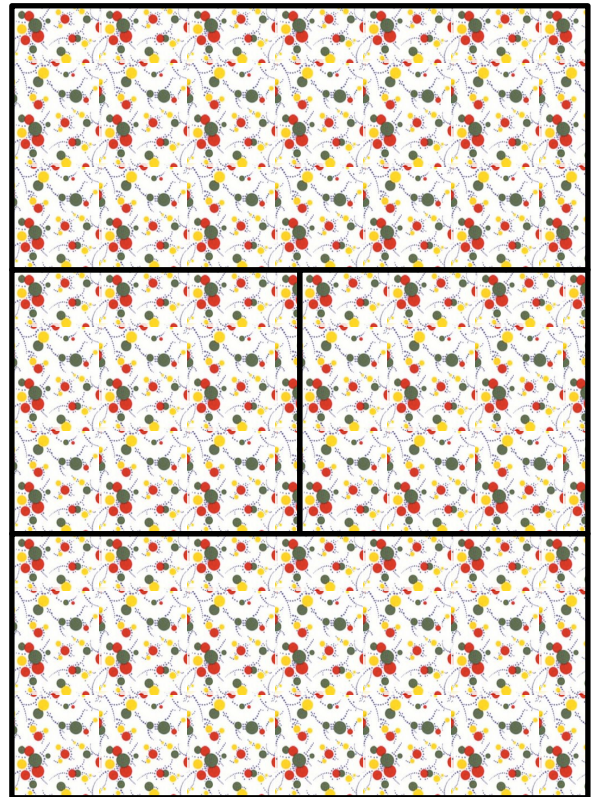
Step 4.

Inset the pieced fabric from Step 2. between the two pieces from Step 3. Figure 4.

Step 5.

Quilt as desired and bind.

Figure 4



Roll out the red carpet. Your Hollywood Quilt is ready for its premier!

Happy Stitching,

Karen

Karen Snyder
Pick Up The Pieces at Anna Lena's!
Anna Lena's
PO Box 1399
111 Bolstad Avenue E., Long Beach, WA 98631
Karen@AnnaLena.com • www.AnnaLena.com



This free-to-download pattern is courtesy of Anna Lena's, Inc. It is intended for your personal use. It may not be copied for distribution, posted on another web site or sold without permission from Anna Lena's, Inc. Thank you for respecting copyright issues.



Andover Fabrics, Inc.
1384 Broadway, Suite 1500
New York, NY 10018
Telephone: 212/710-1000
www.AndoverFabrics.com
info@AndoverFabrics.com

PatternSmithing by Monica Solorio-Snow • TheHappyZombie.com

