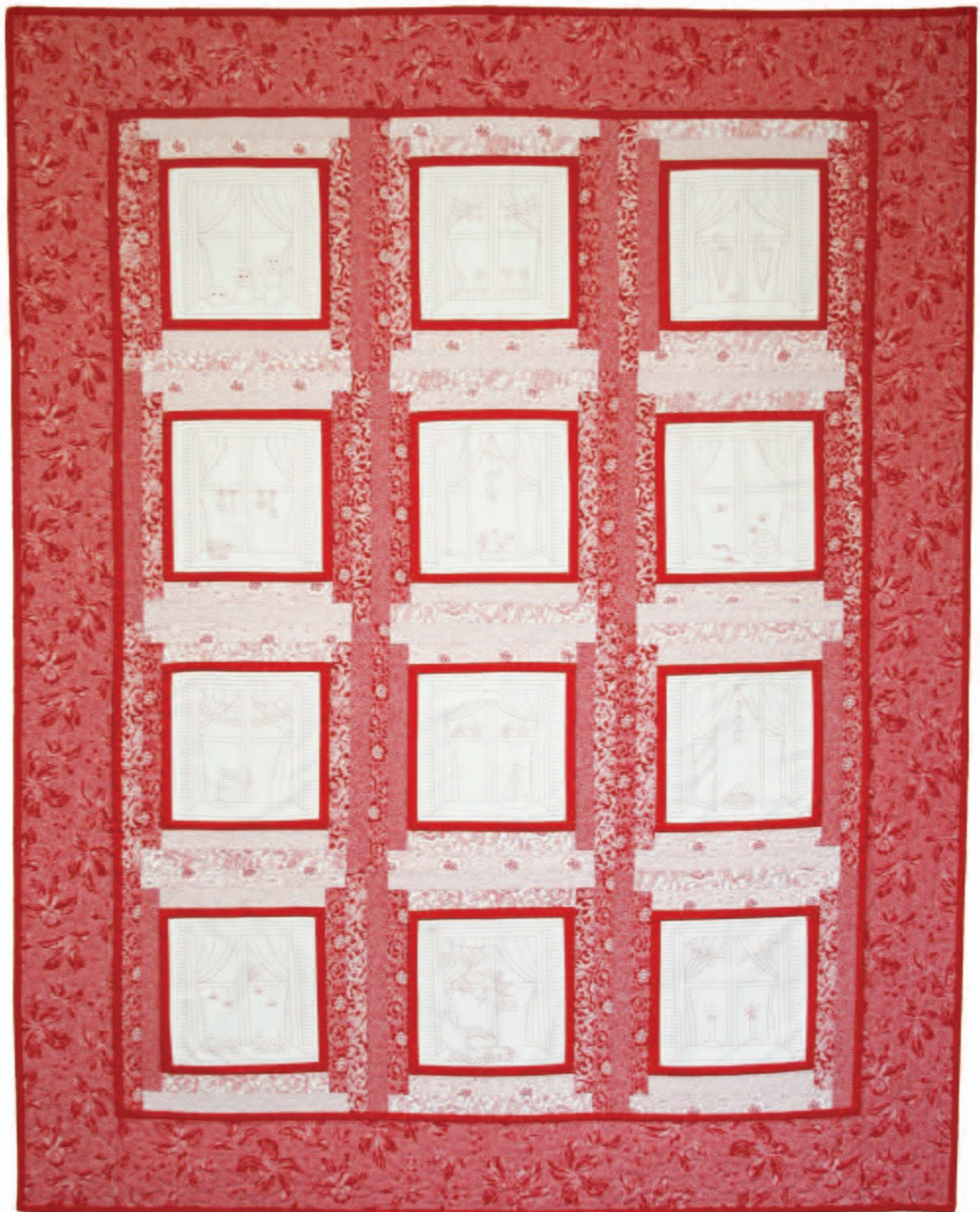


TIMELESS
TREASURES

Through My Window

Designed by Karen Snyder, Studio Anna Lena



Block size: $12\frac{1}{2}$ "
Finished quilt: $49\frac{1}{2}$ " x 62"

Frame the panel squares with light and dark fabrics to give the windows dimension.

Fabric Requirements

1 Through My Window panel: LENA-C5275 White/Red

1/3 yard each red-on-white print (light):

- LENA-C5279 White/Red
- LENA-C5284 White/Red
- LENA-C5283 White/Red

1/3 yard each white-on-red (dark) print:

- LENA-C5278 Red/White
- LENA-C5285 Red/White
- LENA-C5282 Red/White

1 yard Super-Red (solid)–Blocks, Inner border, Binding

1 yard LENA-C5277 Red/White–Outer border

3 yards LENA-C5277 White/Red–Backing

General Instructions

- All strips are cut width of fabric.
- All seams are 1/4".

Cutting

Panel

- Fussy cut each block into an 8" square.

From EACH RED-ON-WHITE (light) print fabric, cut:

Five 1½" strips.

- Sub-cut two strips of each print into four 9" pieces.
- Sub-cut the remaining three strips of each print into three 11" pieces.

From EACH WHITE-ON-RED (dark) print fabric, cut:

Six 1½" strips.

- Sub-cut three strips of each print into three 11" pieces.
- Sub-cut remaining three strips of each print into three 13" pieces.

From the SOLID RED fabric, cut:

- Six 2¼" strips for binding.
- Nineteen 1" strips.
 - Set aside six strips for inner border.
 - Sub-cut remaining thirteen strips into twenty-four 8" pieces and twenty-four 9" pieces.

From the OUTER BORDER fabric, cut:

Six 5½" strips.

Sewing

Framing the Blocks

1. Add an 8" solid red strip to the top and one to the bottom of a fussy-cut square. Press.(figure 1)
2. Add a 9" solid red strip to each side.(figure 2) Press.



fig. 1



fig. 2

3. Repeat with all twelve blocks.

Finishing the Blocks

Note: Light fabrics will always go on the top and bottom of the fussy-cut squares, and dark fabrics will go on the sides. Use prints randomly.

4. Add a 9" strip of light fabric to the top and one to the bottom of a framed square. (figure 3) Press.

5. Add an 11" strip of dark fabric to each side. (figure 4) Press.

6. Add an 11" strip of light fabric to the top and one to the bottom of the square. (figure 5) Press.

7. Add a 13" strip of dark fabric to each side. (figure 6) Press.

Assembly

8. Lay the blocks out in four rows, with three blocks in each row.



fig. 3

9. Sew blocks together into rows; then sew rows together.
10. Sew the five 1" Super-Red strips together end to end.

Measure the quilt from top to bottom through the center and cut two strips to this length. Sew to the sides of the quilt top. Measure the quilt from side to side through the center and cut two strips this length. Sew to the top and bottom of the quilt.

11. Sew the six outer border strips together, end to end. Measure cut and sew the outer borders as in step 10.

Finishing the Quilt

12. Layer the quilt top, batting, and backing and baste the quilt.
13. Quilt as desired.

14. Sew the binding strips together end to end with 45° seams. Fold this strip in half lengthwise, wrong sides together. Line up raw edges with the quilt and sew to the front, mitering corners. Fold binding over the raw edges to the quilt back and stitch in place by hand. Label and enjoy!

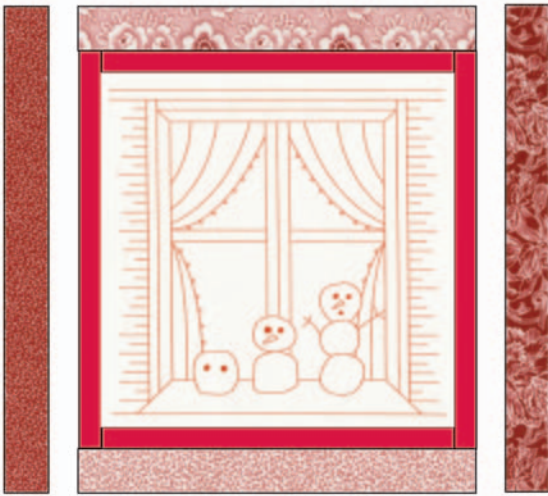


fig. 4



fig. 5



fig. 6

©2008 Karen Snyder, Studio Anna Lena
www.annalena.com

Permission is granted to shop owners and teachers to make copies for promotional or educational purposes only.

This pattern may not be reproduced for commercial purposes.

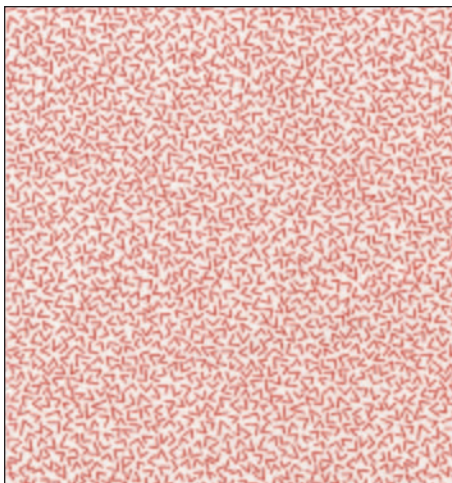
This pattern may not be reproduced for ANY PURPOSE after 10/31/09.



Finished Block



LENA-C5276 WHITE/RED



LENA-C5279 WHITE/RED



LENA-C5284 WHITE/RED



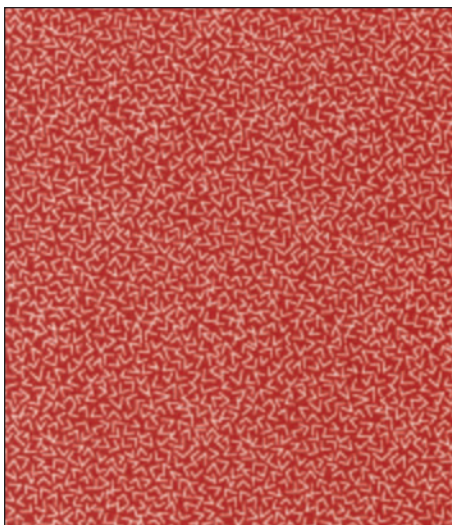
LENA-C5282 RED/WHITE



LENA-C5283 WHITE/RED



LENA-C5285 RED/WHITE



LENA-C5278 RED/WHITE



LENA-C5277 RED/WHITE

ALL FABRICS SHOWN 50% OF ACTUAL SIZE.