

Introducing Karen Snyder's newest collection with Andover Fabrics

Wash Tub Butterflies



Wash Tub Butterflies fabrics by Karen Snyder
Wash Tub Betterflies on My Piano Keys Quilt
by Karen Snyder
Finished size: 51" x 69"



makower uk®

1384 Broadway · New York, NY 10018 · (800) 223-5678

www.andoverfabrics.com

- Free Pattern Download Available -

Wash Tub Butterflies on My Piano Keys

Quilt made by Karen Snyder

Wash Tub Butterflies fabrics designed by Karen Snyder for Andover Fabrics

Quilt finishes approx. 51" x 69"

Fabric Requirements:

3204-R (3204-P) Wash Tub Butterflies (Center Panel) – 2/3 yd.

3211-L (3211-L) Background Fabric (Setting Triangles) – 1 yd.

3210-B (3210-P) Assorted Prints (Piano Key Sashing and Outer Border) – 10 Fat Quarters

3210-Y (3210-G) 3205-R (3205-G) 3207-R (3207-G) 3208-B (3208-G)

3210-R (3210-O) 3209-Y (3207-P) 3209-E (3209-G) 3209-B (3209-O) 3209-R (3209-Y)

3206-R (3206-O) Butterfly Print (Cornerstones) – 1/3 yd.

3209-Y (3209-P) Small Print (Inner Border and Binding) – 1 yd.

3208-B (3208-G) Circle Print (Backing) – 4-1/3 yds.

Cutting Directions:

From 3204-R (3204-P) Wash Tub Butterflies
fussy cut:

Eight 10-1/2" squares

From 3211-L (3211-L) Background Fabric cut:

One 11" strip. Cross-cut into two 11" squares.

Cut each square once diagonally.

Yields four corner triangles.

One 18-1/4" strip. Cross-cut into two 18-1/4 squares.

Cut each square twice diagonally.

Yields eight side-setting triangles (two extra).

From the ten Fat Quarters cut:

Twelve 1-1/2" strips from each fat quarter.

Note: Lay the fat quarter with the long side at the bottom of the mat, selvage at the right.

From 3206-R (3206-O) Butterfly Print cut:

One 6" strip. Cross-cut into four 6" squares (border).

One 2-1/2" strip. Cross-cut into seventeen 2-1/2" squares (cornerstones).

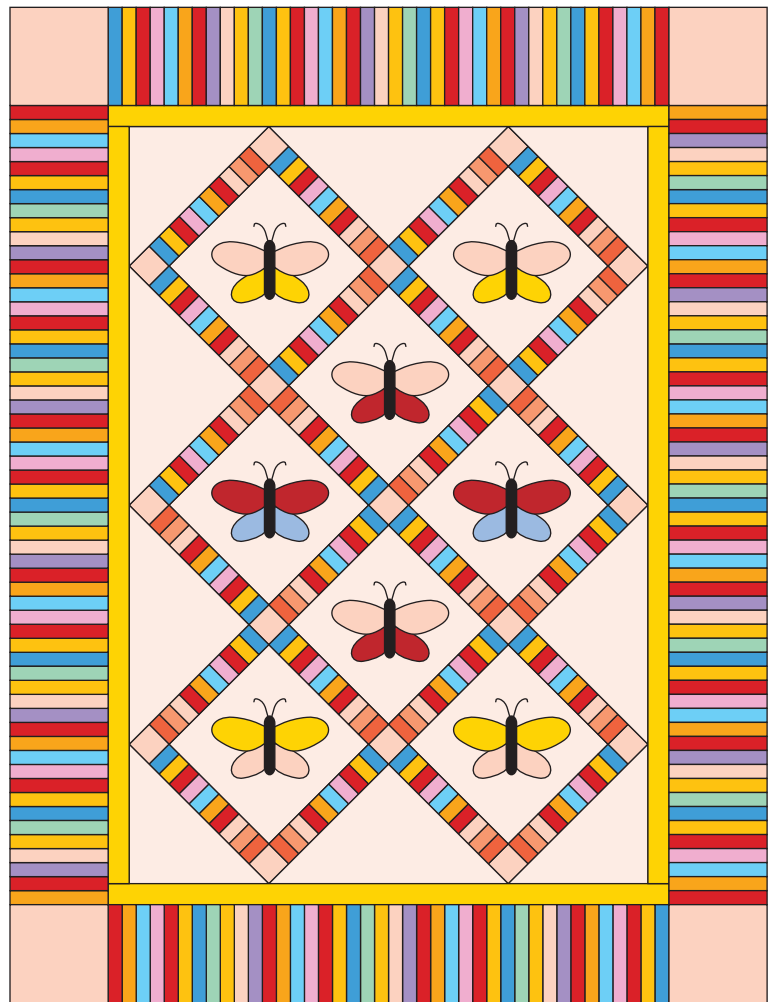
From 3209-Y (3209-P) Small Print cut:

Five 2" strips. (inner border).

Seven 2-1/4" strips (binding).

From 3208-B (3208-G) Circle Print cut:

Backing pieced to measure 55" x 73"



Wash Tub Butterflies on My Piano Keys Quilt

Sew Piano Key Strip Sets:

1. Randomly join 1-1/2" strips into strip sets. Make 12 strip sets with 10 strips each. Press seams in one direction.
2. Cross-cut each strip set into two 2-1/2" strips for sashing and two 6" strips for outer borders.

Assembling the Blocks:

1. Working on the floor or a design wall, lay out the setting triangles, blocks, sashings and cornerstones.
2. Join together in diagonal rows.

Inner Borders:

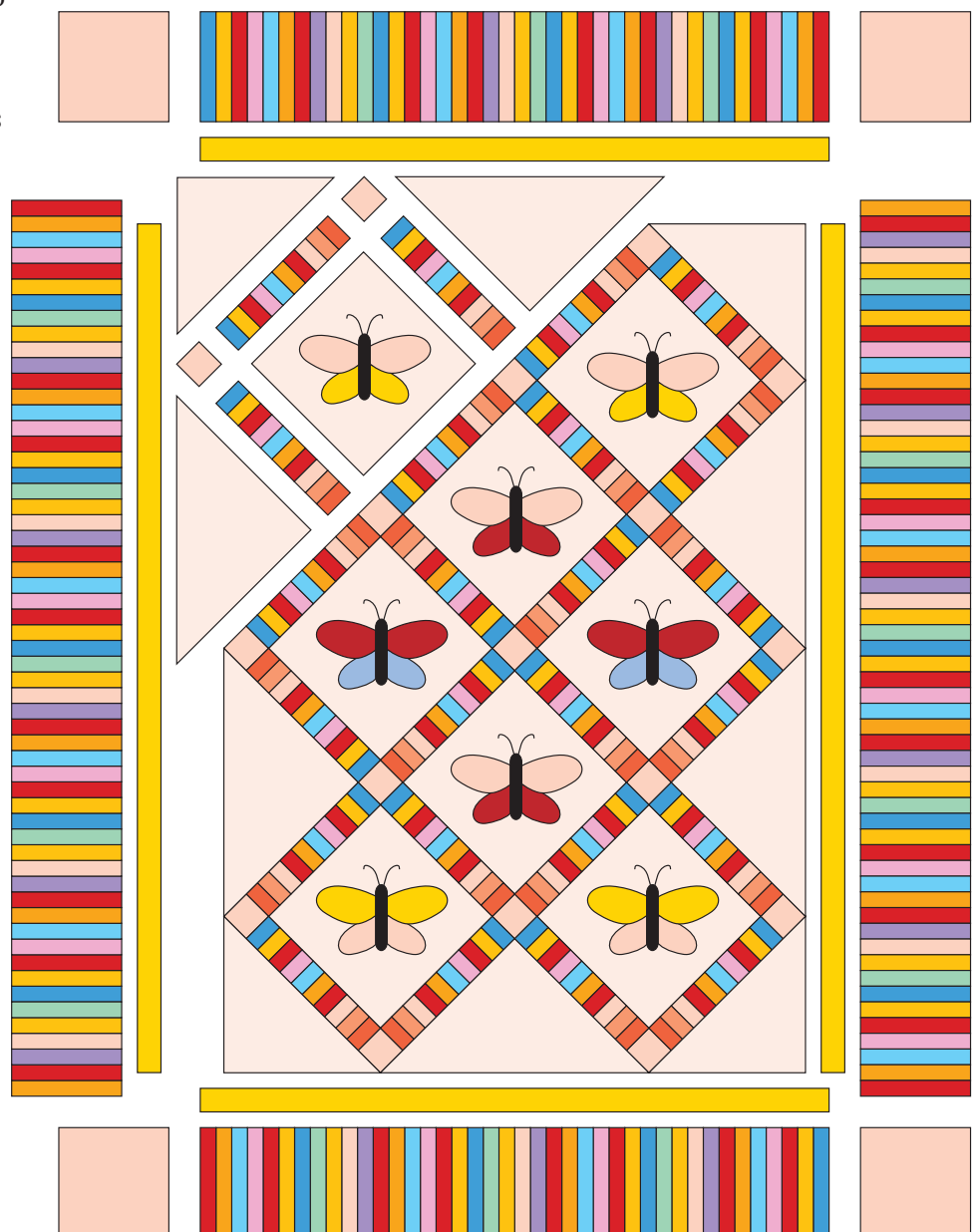
1. Join inner border strips with diagonal seams. Press open. Join all of the strips together until you have one long strip.
2. Measure your quilt lengthwise *through the middle*. This will prevent you from having wavy borders. Cut two strips the length of your quilt. Attach one to each side of the quilt.
3. Now measure your quilt crosswise *through the middle*. Cut two strips this length. Add them to the top and bottom of your quilt. Press.

Outer Borders:

1. Join the 6" wide pieced segments together for the outer border. You will need two segments with 40 strips and two with 58 strips. Check the length of the finished strips by laying them across the middle of your quilt top. If necessary, adjust a few seams to make the borders fit.
2. Add the two side borders.
3. Add a cornerstone to each end of the top and bottom border strips before sewing to the quilt top.

Quilting and Finishing:

1. Cut the backing fabric into two equal pieces. Remove selvages and join long sides together. Press.
2. Layer backing, batting and the quilt top.
3. Quilt as desired and add binding.

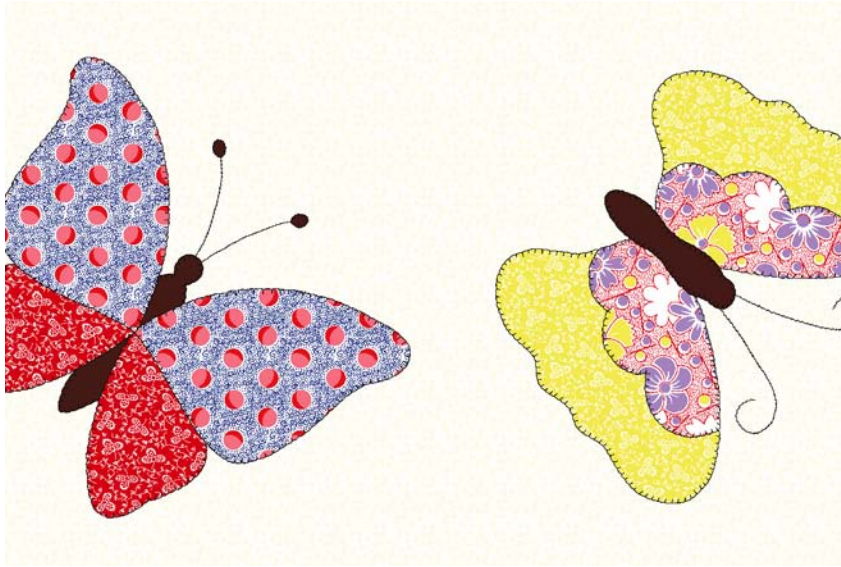


Wash Tub Butterflies

Fabric designed by Karen Snyder



makower uk®



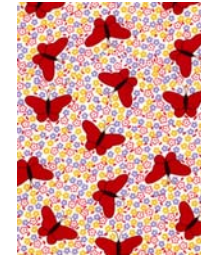
3204-R



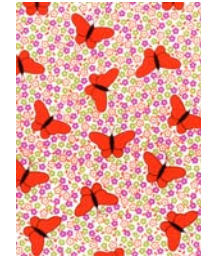
3205-R



3205-G



3206-R



3206-O



3206-P



3204-P



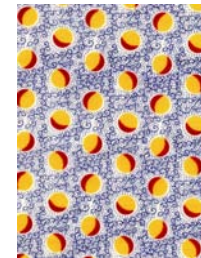
3207-R



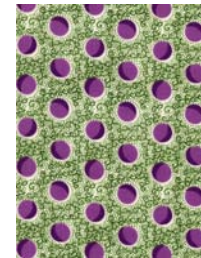
3207-G



3207-P



3208-B



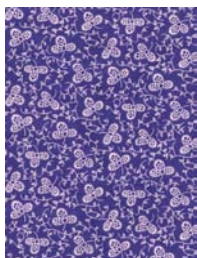
3208-G



3211-L



3209-G



3209-B



3209-P



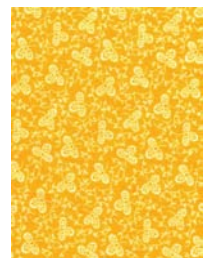
3209-E



3209-R



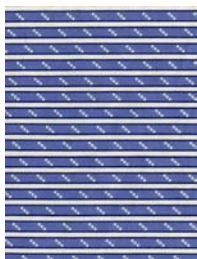
3209-O



3209-Y



3210-G



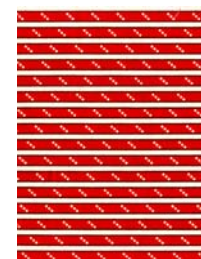
3210-B



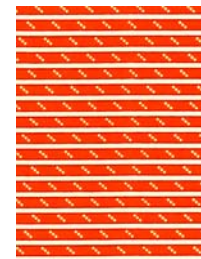
3210-P



3210-E



3210-R



3210-O



3210-Y