

Introducing Karen Snyder's new collection with Andover Fabrics

Wash Tub's Santa Claus Lane



Wash Tub's Santa Claus Lane
fabrics by Karen Snyder
Quilt designed, made and
quilted by Karen Snyder
Finished size: 53" x 66"



makower uk®

1384 Broadway · New York, NY 10018 · (800) 223-5678

www.andoverfabrics.com

- Free Pattern Download Available -

Santa Claus Lane Four-Patch

Fabric Requirements

Blocks

Border Stripe: 3301 R (3301RN) – 1 yard

Holly: 3306G, 3306Y, 3306R (3306V, 3306RN) – 1/3 yard

Dot Garland: 3304G (3304N, 3304V) – 1/3 yard*

Toy Blocks: 3302R (3302N) – 1/3 yard*

Poinsettia: 3305L, 3305Y, 3305G – 1/3 yard

Snowflake: (3303RN, 3303T) – 1/3 yard*

Rings: (3122N) – 1/3 yard

Inner Border

Dot Garland: 3304G (3304N) – 3/8 yard

Outer Border and Binding

Snowflake: 3303R (3303RN) – 1-3/4 yards

Backing

Toy Blocks: 3302R (3302N) – 3-1/3 yards

* *Additional fabric required for binding and backing*

Cutting Directions

From the border stripe fussy cut:

(12) 7-1/2" squares

From each of the remaining block fabrics cut:

(2) 4" strips

Cross cut into (144) 4" squares

From the inner border fabric cut:

(6) 2" strips

From the outer border fabric cut:

(7) 6" strips

From the binding fabric cut:

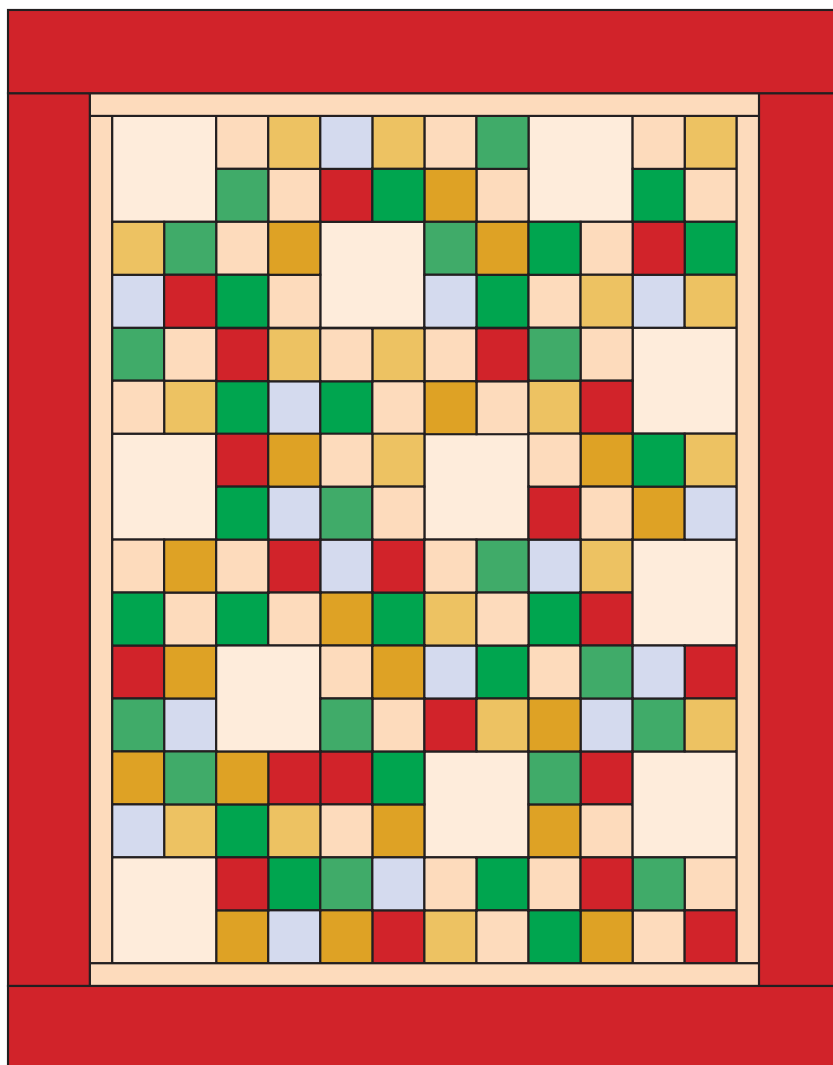
(7) 2-1/4" strips

Quilt designed, made and quilted

by Karen Snyder with

**Wash Tub's
Santa Claus Lane Fabrics
from Andover**

Quilt finishes approx. 53" x 66"



Santa Claus Lane Four-Patch

Piecing the Blocks

Four Patches

Step 1. Randomly pair the 4" squares with a 1/4" seam to make 72 two-patch units. Press the seam to one side.

Step 2. Randomly join two-patch units into four-patches, nesting seams (Figure 1). Make 36 Four-Patch blocks.

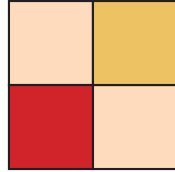


Figure 1

Assembly

Step 1. Working on a design wall or the floor, lay out the blocks as shown in Figure 2.

Step 2. Join the blocks together into rows.

Step 3. Join the rows together.

Borders

Step 1. Join inner border strips together with diagonal seams. Press

Step 2. Measure the width of the quilt. Cut two strips to this size and add to the top and bottom.

Step 3. Measure the length of the quilt. Cut two strips to this size and add to the sides of the quilt.

Step 3. Repeat with outer border strips.

Finishing

Step 1. Divide backing into two pieces. Join together along longest sides. Layer, baste and quilt as desired.

Step 2. Join binding strips with a diagonal seam. Bind.

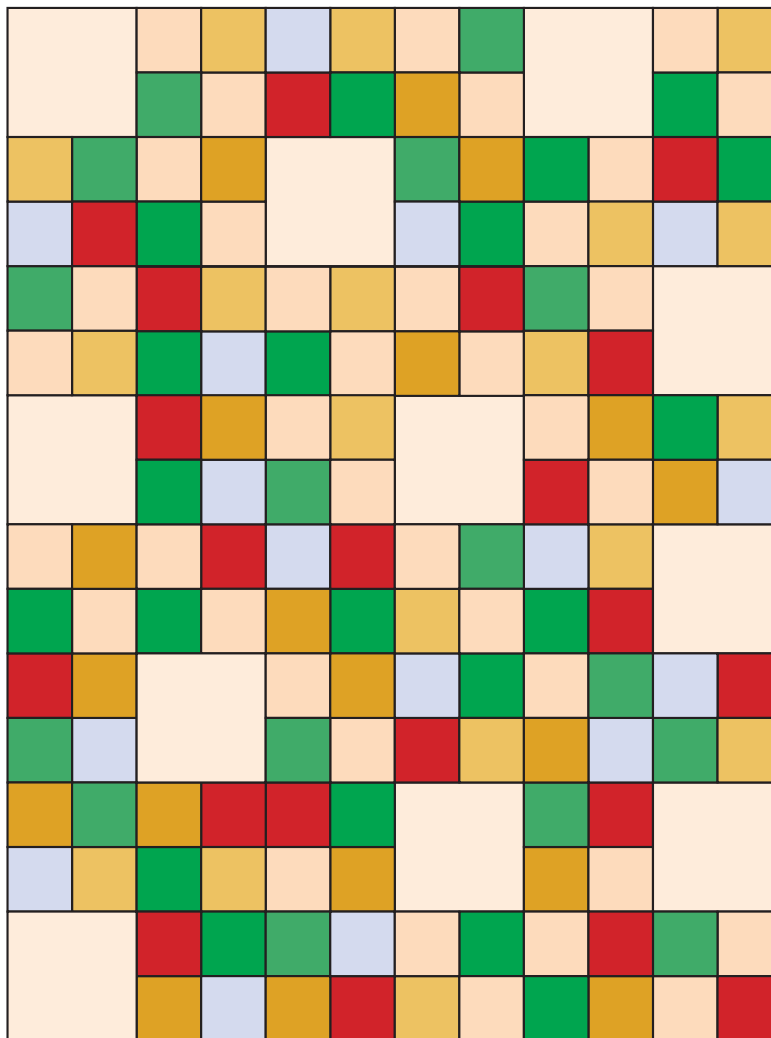


Figure 2

1384 Broadway
New York, NY 10018
(800) 223-5678
www.andoverfabrics.com

Wash Tub's Santa Claus Lane

Fabric designed by Karen Snyder



makower uk®



3302-R



3303-R



3303-B



3305-L



3305-G



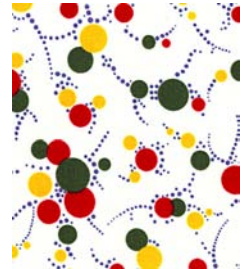
3306-R



3306-G



3306-Y



3304-G



3301-RN



3302-N



3303-RN



3303-T



3305-Y



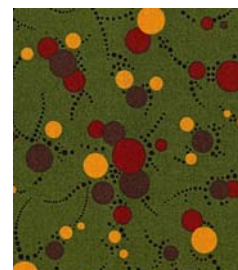
3306-RN



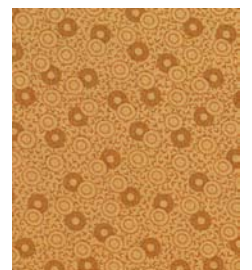
3306-V



3304-N



3304-V



3122-N

Fabrics shown are 33% of actual size.

Free Pattern Download Available at www.andoverfabrics.com