

Introducing Karen Snyder's newest collection with Andover Fabrics

Wash Tub Prints



*Wash Tub Prints quilt by
Karen Snyder
Finished size: 51" x 67"*



makower uk

462 7th Ave · New York, NY 10018 · (800) 223-5678

www.andoverfabrics.com

- Free Pattern Download Available -

Visit Karen Snyder's website at:
www.annalena.com

Every day of the week,

Every day of the week,

will keep.

A happy life I shall keep.

Wash Tub Stars

Quilt designed by Karen Snyder for Andover Fabrics

Quilt pieced by Monica Solorio-Snow; quilted by Karen Snyder

Washtub Prints Fabric Collection designed by Karen Snyder for Andover Fabrics

Block Size: one 24", sixteen 8", sixteen 5" blocks

Quilt Size: 51" x 67"

Fabric Requirements - (the alternate blue/red colorway is listed in parentheses)

2/3 yard	(one panel) Wash Tub Girls 3118P (3118B)
1 yard	Background print 3122L
5/8 yard	Purple Rings for Star Points 3122P (Red 3122R)
1/4 yard	Orange Rings for Star Points 3122O (Yellow 3122Y)
1/4 yard	Green Rings for Star Points 3122G (Blue 3122B)
1/2 yard	Purple Print (Twins) for Frames 3120P (Red 3120R)
1/3 yard	Orange Print (Triplets) for Frames 3123O (Yellow Sprig 3124Y)
1/3 yard	Green Print (Sprig) for Frames 3124G (Blue 3124B)
3/8 yard	Solid Purple for Inner Border (Red)
1 yard	Large Purple Print for Outer Border 3119P (Blue 3119B)
5/8 yard	Yellow Lattice for Binding 3121Y (Blue 3121B)
3-1/4 yards	Backing

Cutting Instructions

From the Wash Tub Girls Panel fussy cut:

- 1 large square 12-1/2" (A)
- 16 medium squares 4-1/2" (B)
- 16 small squares 3-1/2" (C)

From the Background print cut:

- Two 6-1/2" strips. Crosscut into four 6-1/2" x 12-1/2" rectangles (D) and four 6-1/2" squares (E)
- Eight 2-1/2" strips. Crosscut into forty 2-1/2" x 4-1/2" rectangles (F) and forty 2-1/2" squares (G)

From the Purple Rings cut:

- Two 6-1/2" strips. Crosscut into eight 6-1/2" squares for large star points (H)
- Two 2-1/2" strips. Crosscut into twenty-four 2-1/2" squares for small star points (I)

From the Orange Rings cut:

- Two 2-1/2" strips. Crosscut into thirty-two 2-1/2" squares for small star points (I)

From the Green Rings cut:

- Two 2-1/2" strips. Crosscut into twenty-four 2-1/2" squares for small star points (I)

From the Purple Print cut:

- Three 1-1/2" strips for the small frames. Crosscut into ten 5-1/2" segments (J) and ten 3-1/2" segments (K)
- Three 2-1/2" strips for the large frames. Crosscut into eight 8-1/2" segments (L) and four 4-1/2" segments (M)

From the Orange Print cut:

- Three 1-1/2" strips for the small frames. Crosscut into ten 5-1/2" segments (J) and ten 3-1/2" segments (K)
- Two 2-1/2" strips for the large frames. Crosscut into seven 8-1/2" segments (L) and four 4-1/2" segments (M)

From the Green Print cut:

- Three 1-1/2" strips for the small frames. Crosscut into twelve 5-1/2" segments (J) and twelve 3-1/2" segments (K)
- Two 2-1/2" strips for the large frames. Crosscut into seven 8-1/2" segments (L) and four 4-1/2" segments (M)

From the Solid Purple cut:

- Seven 1-1/2" strips

From the Large Purple Print cut:

- Six 5" strips for the border

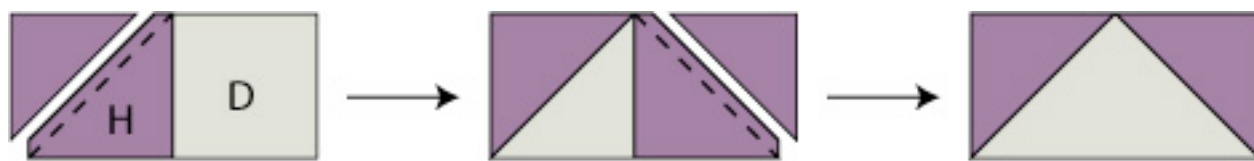
From the Yellow Lattice cut:

- Seven 2-1/4" strips for binding

Block Construction

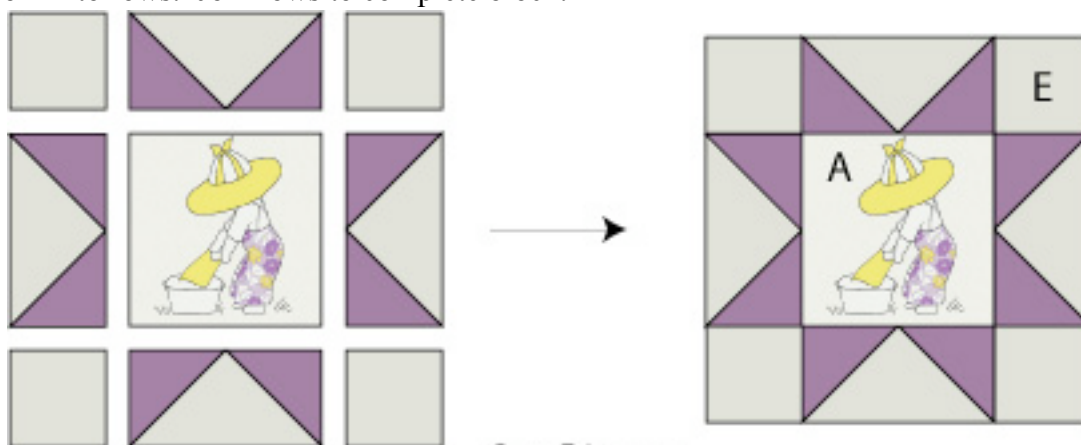
Center Star

Refer to Star Point Diagram. On the wrong side of each of the eight purple ring 6-1/2" squares (H) draw a diagonal line with a pencil. Place the purple square on one end of a 6-1/2" x 12-1/2" background rectangle (D), right sides together, aligning raw edges. Stitch on the drawn line; trim away and discard excess fabric triangles. Press open. Place a second 6-1/2" square (H) on the opposite end. Sew a diagonal seam, trim and press as before. Make a total of FOUR of these Star Point units.



Star Point Diagram

Refer to the Star Diagram. Arrange the star point units, four corner squares (E) and the 12-1/2" Wash Tub square (A). Join into rows. Join rows to complete block.



Star Diagram

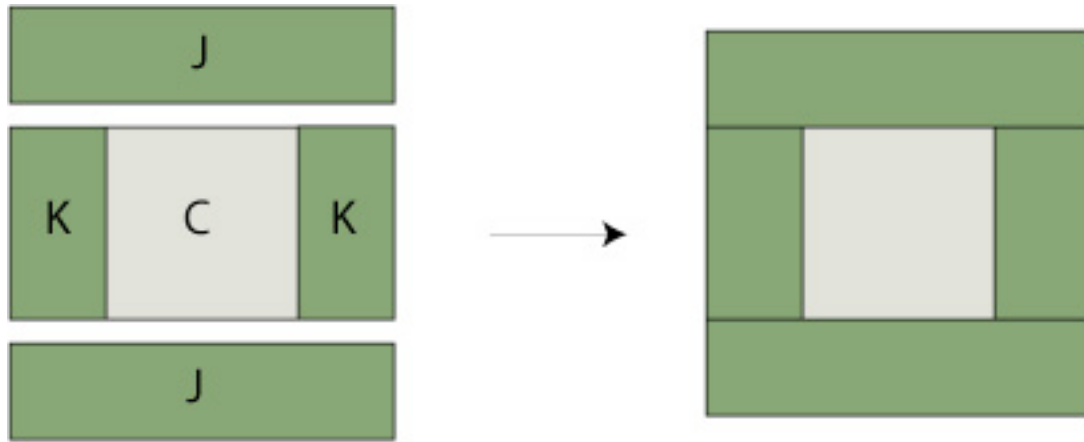
Medium Star

Medium Stars are constructed in the same manner as the Center Star. Use 2-1/2" print squares (I) and 2-1/2" x 4 1/2" background squares (F) to make points. Join with 4-1/2" Wash Tub square (B) and 2-1/2" background squares (G). Make three purple stars, four orange stars and three green stars. ***Note: Keep the girls in days-of-the-week order and check photo for color placement.***

Add a 2-1/2" x 8-1/2" rectangle (L) to the top **OR** bottom of each star. ***Check photo for color placement.***

Small Framed Blocks

Refer to Framed Blocks Diagram. Sew a 1-1/2" x 3-1/2" print rectangle (K) to each side of a Small Wash Tub Girl (C). Press. Add a 1-1/2" x 5-1/2" rectangle (J) to the top and bottom. Press. Frame five blocks with purple, five blocks with orange and six blocks with green, for a total of sixteen (16) blocks. ***Note: Keep the girls in days-of-the-week order and check photo for color placement.***



Framed Blocks Diagram

Medium Framed Blocks

Medium Framed Blocks are constructed in the same manner as the Small Framed Blocks. Use 2-1/2" x 4-1/2" print rectangles (M) and 2-1/2" x 8-1/2" print rectangles (L) and Medium Wash Tub Girl (B). Make two purple blocks, two orange blocks and two green blocks. ***Note: Keep the girls in days-of-the-week order and check photo for color placement.***

Assembly

Refer to photo for color placement and block order. Join three Medium Framed Blocks into a vertical row. Repeat with the remaining three Medium Framed Blocks. Sew one 3-block row to each side of the Center Star.

Join remaining blocks into rows. Join rows and solid purple sashing to complete top. Join rows to complete top.

Join inner border strips with diagonal seams. Press open. Join all of the strips together until you have one long strip.

Measure your quilt lengthwise (top to bottom) *through the middle*. This will prevent you from having wavy borders. Cut two strips the length of your quilt. Attach one to each side of the quilt. Press.

Now measure your quilt crosswise (from side to side) *through the middle*. Cut two strips this length. Add them to the top and bottom of your quilt. Press. Repeat with the outer border fabric.



Quilting and Finishing

Cut the backing fabric into two equal pieces. Remove selvages and join long sides together. Press. Seam will run horizontally on the back of the quilt. Layer backing, batting and quilt top. Baste. Quilt as desired. Join binding strips with diagonal seams. Add binding to quilt.

Wash Tub Prints

Fabric designed by Karen Synder



makower uk®



Panel 3118-B



Panel 3118-P



3119-B



3119-P



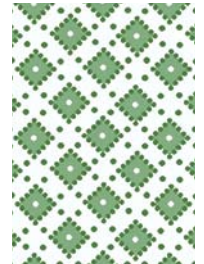
3119-G



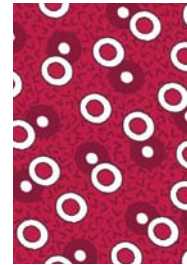
3121-B



3121-Y



3121-G



3122-R



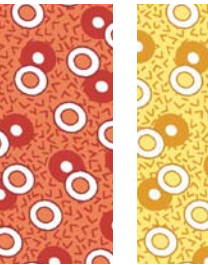
3122-B



3122-P



3122-G



3122-O



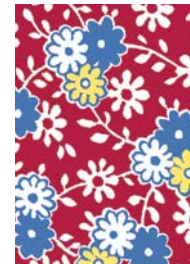
3122-Y



3122-L



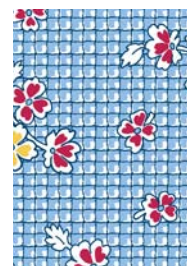
3123-O



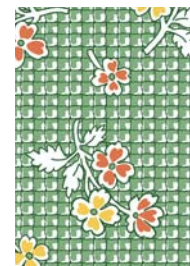
3123-R



3123-P



3124-B



3124-G



3124-Y



3120-R



3120-O



3120-P